

# AD PROMILABADAN RESIDENCY

LUXURY IN IT'S NEW AVTARI!



## AMENITIES



2 SIDE OPEN APARTMENT



G+4 BUILDING WITH LIFT FACILITY



45% OPEN AREA



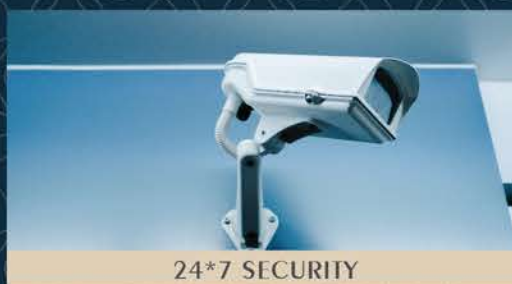
2 BHK APARTMENTS



LOCATED AT POSH RESIDENTIAL AREA



APARTMENT OF 16 UNITS



24\*7 SECURITY



VISITORS CAR PARKING SPACE

### INTERIOR SPECIFICATIONS

Building: Basement + Ground + Four floors.

Structure: Earthquake resistant design, RCC framed structure consisting of B.I.S.codes.

Flooring: Vitrified tiles.

Door frames: 4" X 3" wooden.

Windows: Aluminium.

Toilets: Bath fittings-Jaguar or Equivalent.

### EXTERIOR SPECIFICATION

Walls: Exterior emulsion paint to withstand all weather conditions.

Driveway: Good quality paving tiles to be used all throughout.

Electricals: Quality wires and modular switches of reputed mark.

Kitchen: Granite in counter top & ceramic tiles in dado walls.

Other facilities: Provision for split A/C, lights, fans etc.

Staircase / Lobby: To be finished in good quality tiles and granite.

## SPECIFICATION

### NOTE

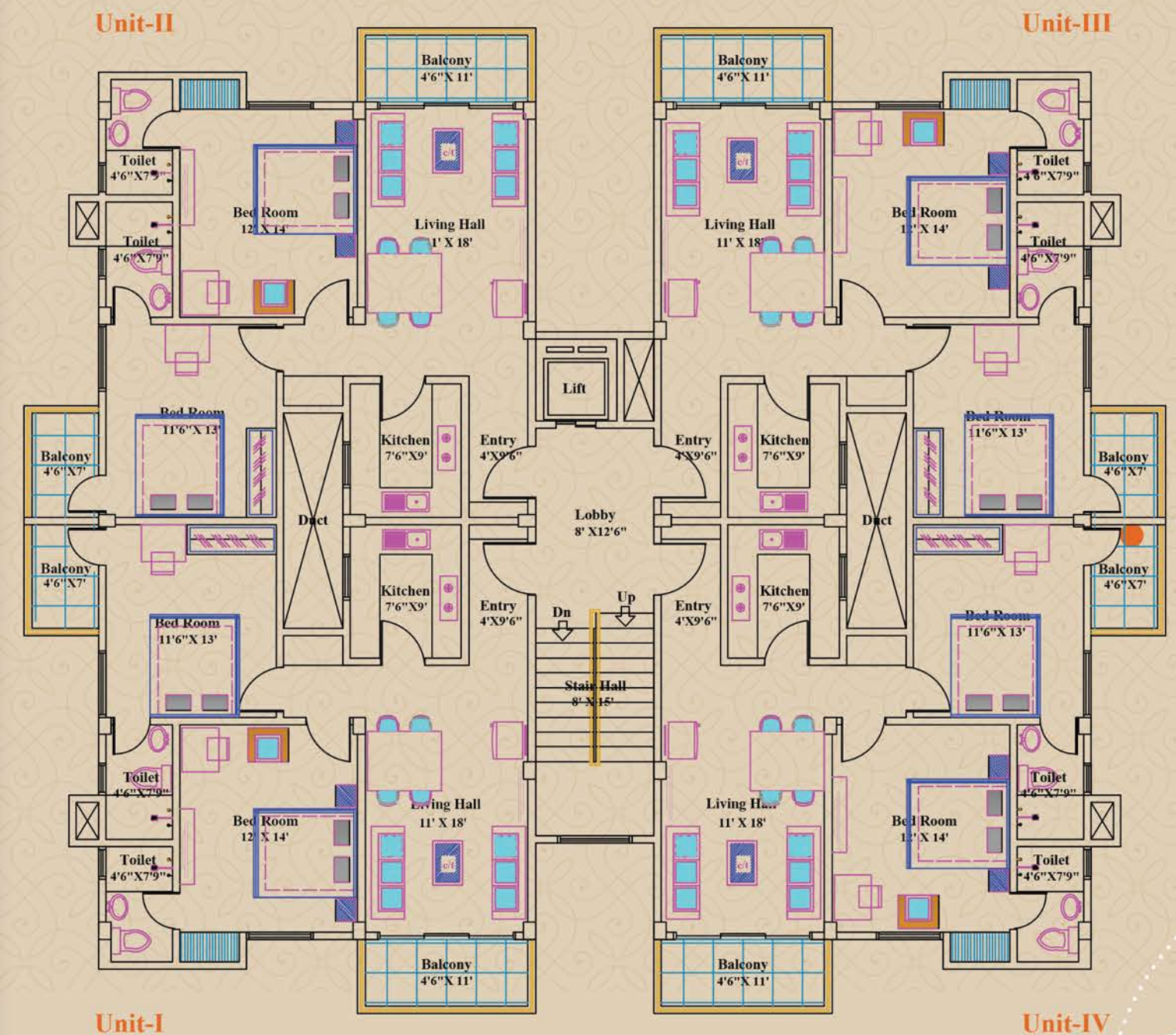
DG Set (Optional) to be decided by flat owners (Society)

### EXTRA CHARGES

Car parking.

ASEB Power Load Estimate, Security & Meter cost. Holding Tax. Stamp duty, Registration & Legal charges. Transformer charges will be applicable

## FLOOR PLAN



### FIRST TO FOURTH FLOOR (TYPICAL)

UNITS	BHK	SBUA
I	2	1275 SQFT
II	2	1275 SQFT
III	2	1275 SQFT
IV	2	1275 SQFT







## AD PROMILABADAN RESIDENCY

### DEVELOPERS

AMAR CONSTRUCTION COMPANY

101 Prafulla Residency, Central  
Chowkidingee, Dibrugarh,  
Assam-786001

### ARCHITECTS

Design Craft Khalimari Dibrugarh  
Represented by  
Shri Chanchal Rajkonwar

### HOUSING LOAN APPROVALS

SBI HDFC PNB

### SITE ADDRESS

Lachit Nagar, Dibrugarh  
Assam-786001

### CONTACT

89 89 89 79 89

### DISCLAIMER

This brochure is not a legal document. It describes the conceptual plan to convey the intent and purpose of PRAMILABADAN RESIDENCY. The images are imaginary and the details mentioned in this brochure are tentative and subject to change at the sole discretion of the developer and/or architects.